

# BELGRADE LAKES ASSOCIATION

*To protect and improve the watershed of Great Pond and  
Long Pond through Preservation, Education and Action.*

Spring/Summer 2024





# PRESIDENT'S REMARKS

By Bert Languet, BLA President

Welcome to the summer of 2024. Let's hope the weather is drier than last year, and we can really get out and enjoy the lakes. Thank you for your continued support as we work together to protect and preserve our lakes.



**Invasives** – While we have had a reduced need to pull milfoil in the Great Meadow Stream due to the herbicide treatment, we do know that it will come back. Already this year, we are seeing more of the plant regrowth than last year. The longer we can keep it at bay, the more funds we can use for other priorities. Invasives come in many forms – both plant and animal. Our best defense is a good offense. That means increasing our spending on Courtesy Boat Inspectors (CBIs) on both Great and Long Ponds by extending the season for the CBIs further into the fall and by training folks to be aware of foreign plants and animals.

**Septic** – We will continue to build awareness of the problems that septic system runoff can cause in our lakes, even from those that might not be right on the lakeshore. Pumping every 3 to 5 years and having your septic inspected really makes a difference. As we know, there are many systems on the lakes that are quite old and may not have been checked or even pumped for several years. Replacing a septic system can be costly, but maintenance will help prolong its life, save you money, and protect the lake water.

**Erosion** – We have increased our funding for the Youth Conservation Corps (YCC) program, and last year we purchased an additional truck for the 7 Lakes Alliance (7LA) to increase this program's productivity and reach. Stuart Cole has done an excellent job of getting projects done. Lynn Geiger has done great work in securing 319 Grants from the state. Charlie Baeder has retired (sort of) from 7LA, but he was instrumental in getting these grants going. I recently attended a meeting where Pete Kallin of 7LA was able to show that our lakes are holding their own and are no longer decreasing in water quality. That is some really great news!

**Loons** – We have two Colby interns again this year under the guidance of Dick Greenan and Lee Attix. They are studying the loon chicks in both Long and Great Ponds. Loon nests have been placed, and we are now waiting for things to heat up.

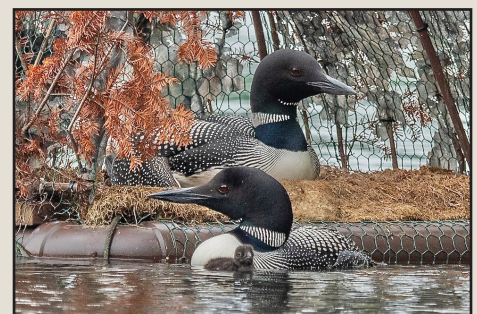
**Membership Events** – Our annual meeting is August 11th at the Belgrade Lakes Golf Club. We are looking to host two smaller events, so watch your email for more information.

We wish you a wonderful summer!

With best regards,

A handwritten signature in black ink that reads "Bert Languet". The signature is fluid and cursive, with a long horizontal stroke at the end.

Bert Languet  
BLA President



A caring loon family all waiting for the second chick to hatch.

# WHAT'S HAPPENING (AND NOT HAPPENING) IN AUGUSTA?

By Richard LaBelle, BLA Vice President

The 131st Maine Legislature adjourned this spring, leaving just about every Mainer disappointed in one way or another. The process in the last session was dysfunctional, at best. Nonetheless, we do our best to keep a positive outlook on the process and hope that pro-lake measures garner a majority of the vote.



As advocates for our lakes we, on the BLA board together with all of you, keep an eye on legislation and weigh-in when it is appropriate. Sometimes, it is simply placing a call to our local legislators, while other proposals are so significant that we testify before the relevant committees. Recently, there were three new pieces of legislation (legislative document, "L.D.") that caught our eyes. Here's what they are, and how they settled out. Also included are where our local legislators stood if a roll call vote was taken in the respective house.

**L.D. 2101.** An Act to Strengthen Shoreland Zoning Enforcement. Passed as emergency legislation, this new law allows a town to revoke or suspend any municipally-issued permit if an owner violates a shoreland zoning ordinance. It further authorizes the town or city to claim a lien against the property for all costs incurred by the town or city and any unpaid penalties related to the violation. The final bill sets out notification requirements, timelines, and actions a municipality can take. It further requires that anyone selling real estate disclose any actual or alleged violations of shoreland zoning statutes, ordinances, rules, or regulations (As an aside, remember that a violation runs with the property and not with the owner; that's why the disclosure requirement is of value). House Roll Call: Rep. Newman (Belgrade): Absent.

**L.D. 2141.** An Act to Enhance Protections for and Better Address Invasive Aquatic Plant Infestations in Inland Waters of the State. This bill got us excited coming out of the gate; the State had recognized the threat of invasive plants like milfoil and curly-leaf pondweed, and they were finally willing to help fund prevention. The bill appropriated \$2,000,000 towards the efforts, which would have flowed through the Maine Department of Environmental Protection and provided major help against invasives, even though the sum still fell short of the real funding needed. Unfortunately, politics overpowered; when it came time to fund the approved bill, the Appropriations and Financial Affairs Committee failed to fund it. The State Senate approved an updated version of this bill late in the session, but the House refused to take it up.

The funds were intended to target programs like courtesy boat inspections and support the management of potential spreading. Our minds are slightly eased with the enactment of the next LD, which directs funds to the cause. Senate Roll Call: Sen. Black (Franklin): Yea; Sen. Pouliot (Kennebec): Excused.

**LD 1342.** An Act to Increase Funding for the Prevention and Control of Invasive Aquatic Species. Look on the side of your boat... if it is in Maine waters, it should have a "Preserve Maine Waters" sticker. For boats registered in Maine, it is attached as the white portion of your registration sticker. If your boat isn't registered in Maine, you must go to a municipal office to get the sticker or contact the Maine Department of Inland Fisheries and Wildlife (207-287-8000) to get a sticker before operating in Maine waters. The current sticker costs \$15 for Maine-registered boats (and is included in your registration), while the out-of-state boat fee is \$45. This bill raises the cost of the in-state sticker to \$25 and the out-of-state sticker to \$60. No one likes new taxes, but as people who love and value the lake, we can be encouraged to know that 70% of the revenue generated from this sticker levy goes to the State's Invasive Aquatic Plant and Nuisance Species Fund, while 30% will be credited to the Lake and River Protection Fund.

# **BLA RAFFLE**

## **A WIN FOR YOU – A WIN FOR OUR LAKES**

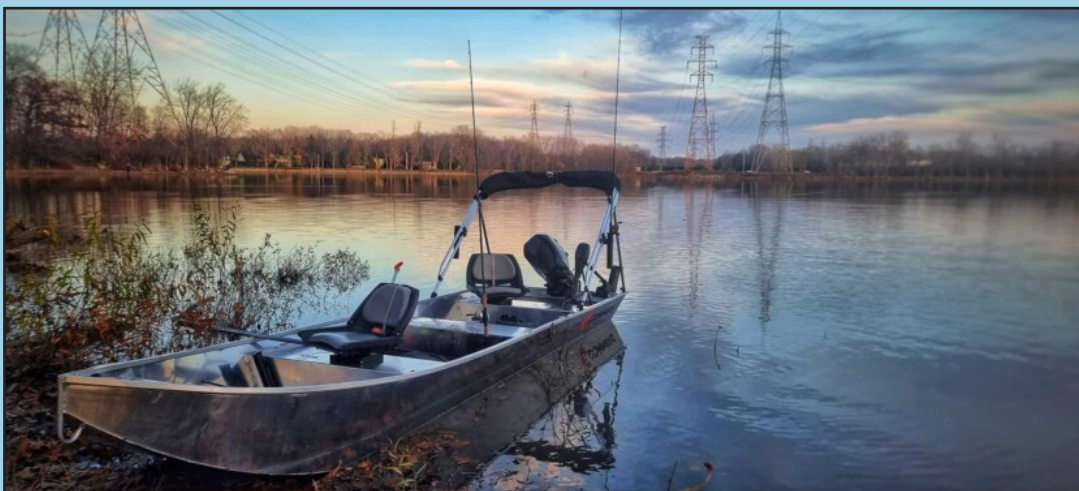
### **AND ANOTHER WONDERFUL HAMLIN’S BOAT**

The Belgrade Lakes Association’s (BLA) mission is to “preserve and protect” the water quality of Great Pond and Long Pond. Your participation has helped us to have a big, positive effect. Besides the raffle increasing awareness of the importance of lake water quality efforts, its revenues have contributed to a considerable number of BLA programs.

- We increased our funding of Courtesy Boat Inspectors for Great and Long Ponds.
- Dramatic reductions in invasive milfoil in Great Meadow Stream (feeding Great Pond) and Great Pond were achieved. The milfoil is still there and is likely to come back, but we have been able to catch our breath.
- We contributed \$20,000 to the acquisition of an additional truck for 7 Lakes Alliance Lake Frontage erosion control Youth Conservation Corps.
- The Watershed Based Management Plans were completed for Great Pond and Long Pond.
- In our Loon project, Dick Greenan led a successful summer internship of two Colby students.
- Most importantly lake water quality, as measured by the absence of “algae blooms” and water depth visibility, continues to hold steady and maybe even improved a little. So it is all going in the right direction.

This summer, with an excellent slate of prizes for the needs of the lakes, we intend to raise \$100,000. Come on down, buy a ticket, buy a book, buy four (the bonus raffle), buy a bunch for your relatives, for your great aunt twice removed, for your long-lost cousin, your neighbors, everyone - get everybody involved with “skin in the game” for our lakes and the raffle. Win! Nancy Fuller did, Shawn Hitchcock did, Chris Emmons did, Mike Gebo did, David Reynolds did, and so did Terry Jacques.

Our list of contributors is impressive! People are lining up to help the raffle, help the lakes, and offer you great prizes to win!



**This year’s first prize is a Hamlin’s Marine V16 Commere fishing, adventure and utility boat with floor, a Yamaha F25LWHC outboard motor, and an EZ Loader B1200 trailer.**

**A \$16,145 value! Thank you, Hamlin’s Marine!**



**Hammond Lumber Company** is generously supporting us again (Go Hammonds!) with a boat lift and three dock sections as prizes. **Gail Rizzo**, a retired BLA Director, is generously providing the raffle with an \$800 gift certificate for four rounds of golf with a cart at the beautiful, scenic Belgrade Lakes Golf Course. Thank you, Gail! **Lynch Landscaping** continues to contribute a \$500 gift certificate. **Day's Store** has also stood by us and is offering a \$300 gift certificate! The **Languets** are gifting another impressive fire pit that people love! The **Farmers Market** team, led by Alice VanderWerken, is donating another wonderful \$300 value gift basket. As the lead bonus raffle prize, **Dick Greenan** will provide his truly priceless Loon Tour (\$2000 value) for four that comes with a picnic basket and two bottles of wine. More prizes are yet to come! (Want to offer a prize? Call me to help, please!)



Thank you, Hammonds!



Thank you, all!

**Win – Win – join us – buy tickets - volunteer – and WIN for our lakes!**  
**\$100,000: We can do it!**



Sincerely,  
Andy Cook  
2024 BLA Raffle Chairman  
207-465-6388

# EVERY DAM THING YOU NEED TO KNOW!

By Dick Greenan, BLA Board Member, Belgrade Lakes Inter-lakes Dams Committee

As I write this update, all of our ponds are just returning to normal due to what felt like endless heavy rain events this past late winter and early spring. Those of you who spent the winter here in the Belgrades are more than aware of the wet winter and spring we've had and its effect on all of our streams, rivers, and lakes. With the exception of Salmon Lake, all of our lakes, up until the third week in April, were 12-14" above full pond when they should have been right at full pond or a maximum of 3" above.

**October 2023 - 4.85"**  
**November 2023 - 2.55"**  
**December 2023 - 8.53"**  
**January 2024 - 1"**  
**February 2024 - .75"**  
**March 1-24th, 2024 - 7.01"**

Maine Rainfall Statistics

The four inches of rain we had last October was normal; but when we received 8.53" in December and another 7.01" just for the first twenty-four days in March, our dams just could not handle the onslaught. Keep in mind that, due to the steep watershed, Long Pond rises up three inches for every inch of rain! So, in December, Long Pond came up 25.59"! This past March, Long Pond had an additional 21.03"! Despite both gates being wide open, that is a lot of water for Long Pond's Wings Mill Dam to process with its two relatively meager 6'10" square gates and a 90' spillway; hence, the result was extremely high-water levels.

Our past high water levels were a major inconvenience, particularly for those who make a living on our recreation, our marinas, dock maintenance crews, etc. But fortunately, we still all have our homes. Thank you all for your patience during these weather events.



**Long Pond's Wings Mill Dam  
April 11, 2024**

Flooding at Long Pond's Wings Mill Dam on April 11, 2024



The Dams Committee is now in recovery mode so we can have all of our ponds back to full pond or a maximum of 3" above full pond. For those of you who are unfamiliar with what is "full pond," that is when the water is barely going over the respective dam's spillway/walkways.

For the past several years, particularly with the possibility of a drought, the Dams Committee has been opting to keep the ponds 3" above to give us a little breathing room because, at 3" above, we will not encounter docks nor our native hummock loon nests from flooding out. The long term forecast meteorologists are calling for a beautiful summer with 26% less precipitation for May and June and 16% less for July through September. We'll keep our fingers crossed!



Belgrade Village Dam spillway/walkway at 3" above full



When was the last time we saw the Village Dam Emergency Spillway in action?  
It's a result of so many spring rain events!

With the Belgrade Lakes Village Dam concrete restoration now in the rearview mirror, we are hoping to have a few years of downtime without any significant dam work – famous last words!!

Thank you all for your continued support, and we hope you enjoy your summer. It's supposed to be another classic and beautiful season as always here in the Belgrades.



# IMPORTANT UPDATE ON BOATING REGULATIONS IN MAINE!

(Reprinted with permission from the Lakes Environmental Association)

In 2021, the Maine Boating Impacts Coalition (MBIC) was established, comprising staff from various lake groups, lake association members, an engineer knowledgeable about wake boats, a wake boat owner, and lake-front landowners. MBIC conducted an extensive literature review on wake boats and their impacts, recommending that this activity should occur no closer than 500 feet from the shore and in waters at least 20 feet deep. Additionally, the coalition discussed strategies to address the spread of invasive aquatic species, including a “home lake” rule, but did not formalize any recommendations on this issue.



Efforts were made to engage potential legislators to address large wakes in the state. Representative Walter Riseman submitted bill LD 693 after the election, proposing a 500-foot setback and a 20-foot minimum depth restriction for wake surfing, garnering support from 9 co-sponsors.

Despite widespread public support, including approximately 115 testimonies in favor and 15 against, bill LD 693 faced challenges from the Maine Department of Inland Fisheries and Wildlife (MDIFW) due to enforcement concerns. Consequently, the bill was not passed, and instead, a second bill was introduced to study the issue further.

MDIFW convened three stakeholder group meetings in the fall of 2023, culminating in a report that proposed a compromise of a 300-foot setback for all boats. This proposal gained traction, leading to the crafting of a new bill with unanimous support from the IFW committee. However, concerns raised by the Maine Department of Agriculture and Forestry led to the setback applying solely to wake surf boats.

Despite hurdles, the bill was enacted on April 3, 2024, with provisions including a 300-foot minimum distance from shore and a 15-foot minimum depth for all wake surfing activities. Additionally, boat dealers are required to inform purchasers about education opportunities, and MDIFW is mandated to report back to the legislature on enforcement within three years.

It's noteworthy that the original consensus point from the stakeholder group, emphasizing the importance of informing wakeboat buyers about potential environmental impacts, was omitted from the final bill. However, the unexpected support for a 300-foot setback for all boaters from industry representatives signals potential for future collaboration.





Looking ahead, there is concern that the 2027 report from MDIFW may lead to a reconsideration of current regulations. Thus, ongoing efforts will be necessary to advocate for maintaining or expanding these rules and to counter any attempts to roll back regulations. To contact the coalition, email [MBIC.Maine@gmail.com](mailto:MBIC.Maine@gmail.com).

## BLA ATTENDS NONPROFIT DAY AT MAINE'S STATE HOUSE

Belgrade Lakes Association (BLA) Treasurer, Blaine Horrocks, participated in the 2024 Nonprofit Day at the Maine State House. The Maine Association of Nonprofits (MANP) hosted the annual event for the 20th consecutive year. This year's event focused on garnering support for a blanket sales tax exemption for 501(c)(3) organizations which would benefit over 5,000 charitable nonprofits across the state, including the BLA. In addition to the conference, Blaine attended a meeting of the Taxation Committee which discussed the sales tax exemption issue. Subsequent to the conference, a blanket sales tax exemption for all Maine nonprofits was included in the Governor's supplemental budget.



MANP Executive Director Jennifer Hutchins and BLA Treasurer Blaine Horrocks are in the Maine Statehouse Hall of Flags.



## 2024 BLA LOON SURVEY UPDATE

By Dick Greenan, Chairman, BLA Loon Preservation Project

I cannot believe that our Belgrade Lakes Association is now into their sixth year of their Loon Preservation Project. Our mission continues to develop a responsible and comprehensive plan with which to support our loon population in the very best sustainable manner, but a little help from Mother Nature would surely be appreciated! We are again troubled by a decrease in chick productivity and are trying to get to the bottom of this dilemma.



A Long Pond banded loon has brown trout lunch at the Village Dam spillway.

In the past Fall/Winter Newsletter we reported: "Following this past breeding season (2023), we started off with just 5 chicks from Great and 8 chicks from Long Pond. Unfortunately, out of Great Pond's 5 chicks, we suspect that only one made it to the Fly-off. The other four fell victim to mother nature. On Long Pond, out of the original 8, 4 of its chicks made it just about all the way to the Fly-off, but only 2, as best we can determine, made it to the Fly-off. . . . . "Overall breeding productivity has been a major concern throughout the northeast. Out of a possible twenty-five loon territories between Great and Long Ponds, we had only ten territories that produced one or more chicks. We did lose a few eggs due to predation and collected another six eggs this year that were just plain abandoned. Bad Parenting? You be the judge! As we collected seven eggs last year and eight the year before, it appears that this is a trend in the right direction which is, obviously, a very premature assumption."

We have our work cut out for us again this season and, it appears, for the immediate future. One possible intervening factor is that we do have a very healthy adult loon population, due in part to our relatively excellent water quality; but that may be the crux of the problem! They, too, may see the Belgrade Lakes as a destination! We had a few territories last year that never nested due to the constant pressure from intruding adult loons in an attempt to take over one of our prized nesting territories. Maybe having the constant threat of intruders is upsetting for our nesting pair. Are both Mom and Dad leaving the nest with the first hatched chick and, in doing



so, are they now more preoccupied with this new hatchling's welfare than they are in its sibling and consequently abandoning the second egg? We wish we knew the answer(s), but we are leaving no stone unturned in our quest to understand what is happening not just here in the Belgrades, but throughout the northeast!

Well, now for some great news!! Thanks to our loon consultant and mentor, Lee Attix, and Colby College's Professor of Biology and Program leader, Catherine Bevier, we have two new Colby College interns again this summer. Jodie Tsih and Barlow Herbst will provide young eyes along with some tremendous accumulative experience! Our valued local resident loon volunteers have again committed to continue with their eyes on the lakes as well, but they will now be assisted by these two very capable and dedicated students to assist us with the daily observations. Equally important will be their expertise in record keeping those statistics to better assess our efforts for future activities.



Barlow Herbst



Jodie Tsih

Barlow will be a sophomore majoring in Environmental Science with a focus in Ornithology and Conservation. Jodie will be a senior with a major in Biology and a concentration in Ecology and Evolution. Our new interns come with a great deal of combined experience: five years as a volunteer with the Willistown Trust Bird Conservation Program in Newton Square, PA., wildlife monitoring with the Round River Conservation Studies in Botswana, etc. Please join us in welcoming Barlow and Jodie! We are very fortunate to have these two very capable individuals on the team!



Jamaica Point, Great Pond adult trying to stomach a grotesque and invasive Mudpuppy. She ultimately got it down!

Our loons typically nest around Memorial Day. With an average 27-28 day gestation period, we expect to see our first chicks as early as June 18th up until around the 4th of July.

There is something that you can all do to help us protect this important wildlife resource: observe the State-wide 200' No-Wake Zone, and spread the word to fellow boaters. Although this law is important for many obvious reasons, even when practiced, but by itself it is not adequate to ensure our loons' safety and their nesting habitats. Canoeists, kayakers, and, in particular, paddle-boarders cause many birds to be flushed from their nests because loons perceive a threat from a standing human.



The nesting loon was inadvertently flushed from the nest by two young inquisitive paddleboarders. You can see the loon resurfacing in the back.

As stated before, the health of our loon population, as well as the Belgrade Lakes Association's Loon Preservation Project, is contingent upon your support. Although we are in our sixth year of the project, we continue to have our work cut out for us. Increased funding will enable us to construct additional nests, maintain monitoring, and hopefully fund at least one evening banding session.

Please support the Loon Preservation Project online at [blamine.org](http://blamine.org) or via mail at the Belgrade Lakes Association, P.O. Box 551, Belgrade Lakes, ME 04918. Any donation would be most sincerely appreciated by all of your volunteers. Thank you, and we'll see you on the lake!



Photo courtesy of Peter Agnes, BLA member.



# **GREAT POND YACHT CLUB INVITES YOU TO EXPLORE THE WORLD OF SAILING**

By Andrew Dallas, Commodore of GPYC



Picture yourself speeding across the shimmering waters of Great Pond with the wind in your hair as you cross the finish line. Sailing isn't just a pastime; it can be thrilling, relaxing, and rejuvenating with newfound friends. Great Pond Yacht Club offers adults like you an exciting blend of education, competition, and social connection.

Whether you're new to sailing or a seasoned sailor and racer, the club welcomes you. Join our friendly community where every two weeks brings the excitement of a regatta set against the stunning backdrop of Great Pond. Hosted by various families along the shore, these races test your skills and offer a view of our lake from a new vantage point.

Our calendar is packed with summer and year-round activities, including races, invigorating hikes, and cross-country skiing adventures. Our commitment to giving back also shines through by our support for the Youth Sailing Program, a collaborative effort with Sail Maine and the Center for All Seasons in Belgrade. By becoming a member of Great Pond Yacht Club today, you're not just investing in your own entertainment, but you're also contributing to a vibrant community and nurturing the next generation of sailors.

Secure your family membership now at [GreatPondYachtClub.com](http://GreatPondYachtClub.com) for just \$100 per year. And for the young adventurers in your life, don't forget to explore the enriching opportunities offered by the youth sailing program on Great Pond at [SailMaine.org](http://SailMaine.org). Join us in celebrating the spirit of sailing and embark on a journey filled with friendship, excitement, and meaningful connections.



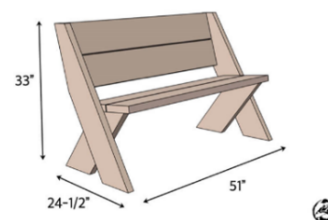
## JUST ASK BERT: HOW DO YOU BUILD A BENCH?



Building an outdoor bench is a great way to enhance your yard, fire pit, or trails. I have built around 30 of them and have them placed around my property so there is always time to sit and listen to the birds and frogs.

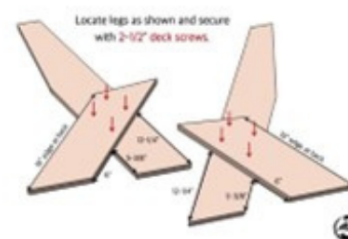
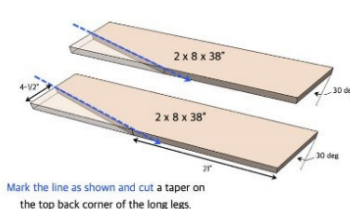
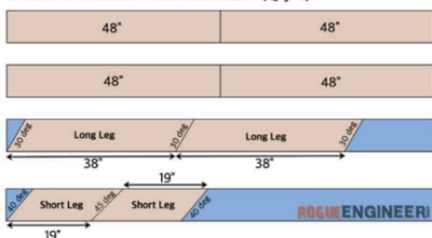
One of the designs that I have used comes from the website <https://rogueengineer.com/diy-outdoor-bench-plans-with-back/> and utilizes 4 pressure treated 2X8's - 8 feet long. There are clear instructions on the website and the design is simple enough that you can visually see how to make the cuts and place the pieces without any reading at all.

The tools needed are a framing square, pencil, circular saw, screw gun, and 2 1/2 exterior screws. The construction is fairly simple, though you will need to know how to use the framing square to measure your angles.

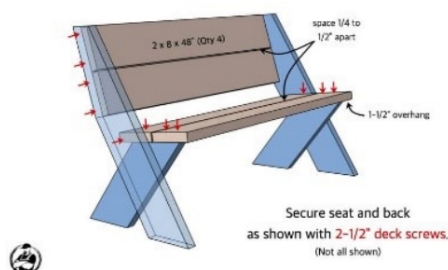


Start by measuring the pieces and marking the angles. Using the circular saw to cut the pieces along the marked lines. Make the last cut and then assemble the legs.

2 x 8 x 8' Pressure Treated Lumber (Qty 4)



Once the legs are assembled - you can attach the seat and back pieces. Having an extra set of hands makes it a lot easier. On the right is a picture of the bench I built. Good luck!





# WHO WANTS TO SWIM IN SEPTAGE? NOT US!

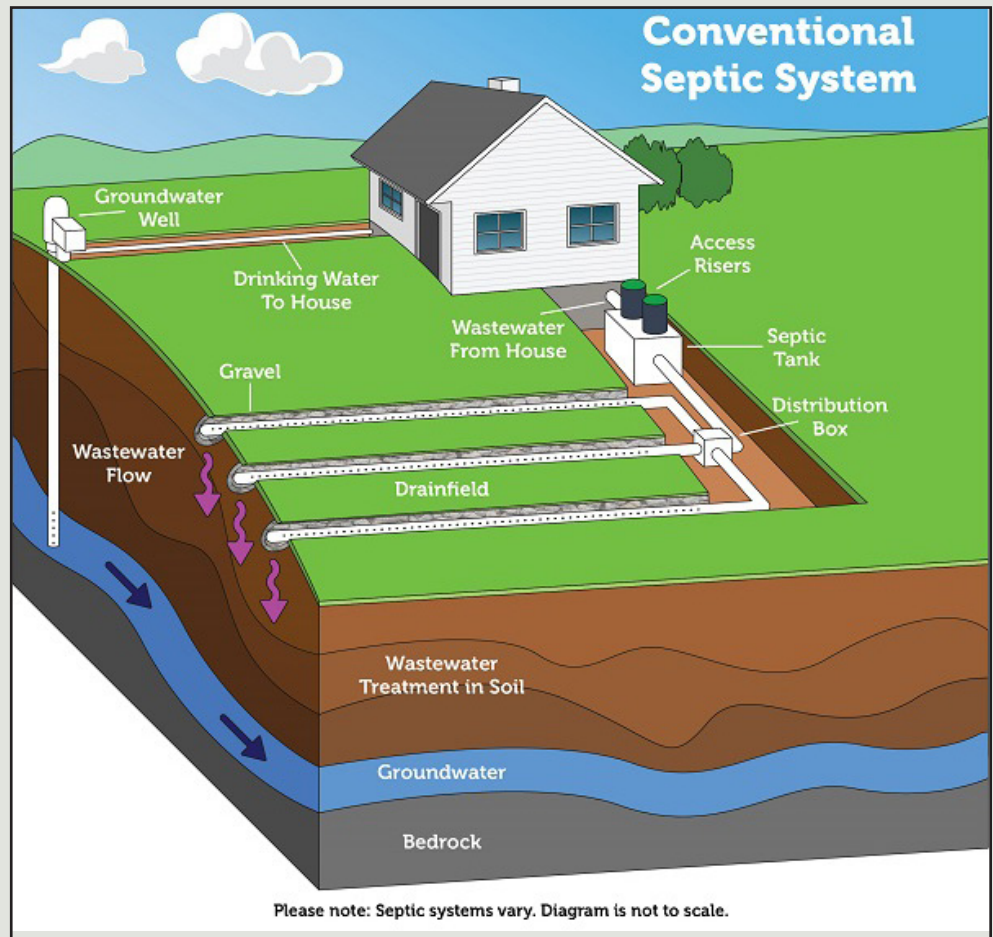
By Richard LaBelle, BLA Vice President

No, it's not quite as gross as the title might imply, but an unhealthy or poorly maintained septic system takes a significant toll on the lake. You're hearing more and more from the BLA about the importance of maintaining your septic system. Whether you live right on the lake or somewhere else in our watershed, a healthy and well-maintained septic is important for our lakes. It supports clean water and helps to keep a balanced level of nutrients. If too much phosphorus gets into our lakes, we could end up with lakes that turn green since septic systems serve as a significant source of phosphorous in the watershed.

It's crucial to take charge of your septic system. Do you know its location on your property? When was the last time you had it pumped? Has it been inspected by a qualified professional? How big is your tank? These are all important factors that you should be aware of. If you don't know the answers, there are people who can help you find them. If you haven't pumped your system in the last 3-5 years, call today to schedule an appointment!

The BLA has partnered with Stanley's Septic & Construction, a local, family-owned business, to make maintaining your septic easier (and a bit more affordable). They offer a full portfolio of septic services, including pumping. They are now offering a 10% discount on septic pumping if you call and mention the BLA. What a great benefit to you... and our lakes!

Learning about maintaining a healthy septic system might be a bit boring and can definitely stink, but it will benefit the health of our lakes. To learn more about your septic system and how it impacts lake water quality, please visit Maine Lakes at <https://www.lakes.me/septic>.



**We're pleased to partner with**

*Stanley's*  
Septic & Construction  
453-9819



**OF TAKING CARE OF BUSINESS....**

A local, family-owned, full-service septic company.  
Pumping, inspection, replacement.

**Give them a call today to  
schedule your septic service.  
Mention the BLA and receive**

**10% OFF!**

# INVASIVE AQUATICS PROGRAM NEWS

By Sharon Mann, Director IAP

## Be on high alert for lasagna noodles!

Curly-leaf Pondweed, an invasive aquatic plant with crimpy “lasagna noodle” leaves has now been found in two of the Belgrade Lakes- East Pond (The Serpentine only) and North Pond. During an early-season paddle to remove floating fragments in North Pond, our IAP Coordinator, Josie Miller, spotted three patches of curly-leaf pondweed off the Northeast shore of Pomleau Island. Plant removal of these new patches began immediately the following day.



This rapidly growing pondweed is native to Eurasia and lacks natural checks and balances which leads to excessive growth that inhibits native aquatic plants and wildlife that depend on them. Curly-leaf pondweed can form dense mats in shallow water, limiting recreational activities such as swimming and boating. Unlike our native aquatic plants, which are just now waking up from their winter dormancy, curly-leaf sprouts in the late fall and reaches its maximum growth in June. Towards the end of June, curly-leaf develops new turions, a winter bud which can remain dormant and viable for 5 years, and the mature plants die back. Due to the unusual life history of this plant, locating and managing it is challenging.



A Curly-leaf Pondweed patch found in North Pond. Note the unique leaf appearance.



North Pond is connected to Great Pond by Great Meadow Stream, and motorboat traffic between North Pond and sister ponds in our watershed is common. We are doing everything we can to prioritize the removal of this infestation before it can further spread in and outside of North Pond. Please be on high alert for this plant when performing self inspections on your boating equipment, and inspect debris that washed up on your shoreline. Like it or not, we are ALL connected by water, and what happens in North Pond does impact all downstream lakes. If you would like to help with this management effort, please consider “adopting” your shoreline, joining a group paddle survey, or donating to North Pond Association’s curly-leaf pondweed fund. For more information contact [sharon.mann@7lakesalliance.org](mailto:sharon.mann@7lakesalliance.org).

### **Great Meadow Stream**

On June 16, 2022, the decade-old infestation of variable-leaf milfoil in Great Meadow Stream received an herbicide treatment. Treatments of this kind are never expected to be the silver bullet to eradicate an invasive species once and for all. Rather, the use of herbicides is meant to reduce the size of an infestation so that it can be managed sustainably by manual efforts. Thus far, the herbicide treatment has performed well beyond our expectations. In 2023, a single variable-leaf milfoil plant was found and removed at the mouth of the stream. During our routine “kick-off” dive in early May, we found a few plants in the same area as last year. The plants were removed and have not regrown (yet). Based on similar treatments in Annabessacook and in other states, an uptick in regrowth is to be expected two years post treatment- which is this summer for us. Great Meadow Stream will be monitored bi-weekly for regrowth to make sure any regrowth is removed before it can grow into an established patch.

### **Surface Use Restriction in Great Meadow Stream**

The motorized boat restriction in Great Meadow Stream has ended despite our ongoing management efforts. Although it is now legal to take a motorboat in the stream, we kindly ask that you enjoy fishing and motorboating in the other 99.97% of Great Pond’s beautiful water. Since the stream has been closed to motorboat activity, loons, geese, sandhill cranes, and various other waterfowl and wildlife have flourished in the absence of human disturbance. This gem of the Belgrade’s is best enjoyed from a paddle craft, where you can truly appreciate the stream for what it is, a natural ecosystem buzzing with wildlife. If you insist on taking a motorboat into Great Meadow Stream (again, I do not recommend doing so), please follow these guidelines.

- 1. Do not exceed headway speed.** If you are seeing waves on the shoreline, you are going too fast! Waves sink loon nests. Do not do it.
- 2. Stick to the channel to protect nature and your boat.** The stream is PACKED with native plants. This is a good thing! Native plants provide habitat to juvenile fish, and they suck up nutrients that would otherwise fuel algae growth. Clogging up your motor with weeds harms your motor and can lead to costly repairs.
- 3. Remove all plants from your boat and fishing equipment** before you leave the stream and head out into open water. Plant material should be discarded on land away from water sources in case there are invasive plant fragments in the mix.

Please do your part to make sure all of the hard work (not to mention money) that has been put into making this stream enjoyable is not undone by irresponsible motorboating.

### **Rome, Robbins, Swann, and beyond**

The smaller infestation in Robbins Mill Stream, Rome Trout Brook, and Swann’s Brook continue to be managed using manual efforts. Each area has received its initial “check up dive” for the season, and pulling will begin in June. The crew will have a presence in each stream on a bi-weekly basis. The two new areas where single plants were found in 2023 will also be monitored bi-weekly.

### **Adopt-A-Shoreline training and plant ID workshop schedule**

Workshop-Wednesdays will resume on June 26th at 7 Lakes Headquarters (MLRC). Please stop in to learn how to identify native and invasive aquatic plants and get signed up for Adopt-A-Shoreline! Additionally, we will

be setting up mini workshops at a handful of Farmer's Markets to reach the weekend crowd. Mini workshops will be held at every other Farmer's Market beginning June 9th. As a reminder, Adopt-A-Shoreline is the best way for us to find new infestations before they become established. If you see something in the water around your docks, it is worth investigating!


### Call for Courtesy Boat Inspector volunteers

In a given season, there are up to 40 Courtesy Boat Inspectors on staff, a dozen or so volunteers, and 7 boat launches to cover. All of these working parts are a lot to juggle. That's why our IAP team used the "HomeBase" app. HomeBase is used to manage large groups of people. It was originally designed to help waitstaff in the restaurant industry.


For those who have worked in the service industry before, you'll recall how much the weekly schedule was subject to change. Waitstaff often change their availability and ask their coworkers to "swap shifts." Demand for coverage in a specific seating area will change depending on the number of guests, etc. Courtesy Boat Inspectors are similar to wait staff in that way - personal schedules are subject to change, and we move CBIs around based on boat traffic and infestation status. The HomeBase app streamlines the ability to see Open Shifts in real time and enables the CBIs to communicate with each other and managers in one central location.

We are asking volunteer CBIs to join the HomeBase app so that they can pick up Open Shifts as needed. There are three key times a season when additional support is needed due to low employment pool: 1) NOW as ~40% of our CBIs are highschool students (they will be available to work by mid June); 2) the 4th of July- it is difficult to find people willing to work on this holiday; and it is, of course, the busiest day of the year. Josie and I typically end up covering up to 12 hour shifts at the launches on the 4th; 3) end of August to October as ~90% of the employment pool returns to school (High School and College). Please consider joining HomeBase to help support these coverage gaps where there are limited employment pools.

For questions regarding the CBI schedule, please reach out to Josie at: [invasives.coordinator@7lakesalliance.org](mailto:invasives.coordinator@7lakesalliance.org).

  
BLA





## CLYNK for BLA!


*Donate your redeemable bottles and cans to the Belgrade Lakes Association!*

An easy way to support the Belgrade Lakes Association, the oldest Lakes Association in Maine, with their ongoing mission "To protect and improve the watershed of Great and Long Pond through preservation, education and action."

**HOW TO CLYNK:**

1. Place your redeemables in a green BLA-CLYNK bag.
2. Tie the bag securely.
3. Drop the bag off at your nearest Hannaford or CLYNK.

**Already have a CLYNK account?**  
Login > Donate > Donate from my account > Belgrade Lakes Association

  
Bring it to your local Hannaford Supermarket and Clynk will take it from there!



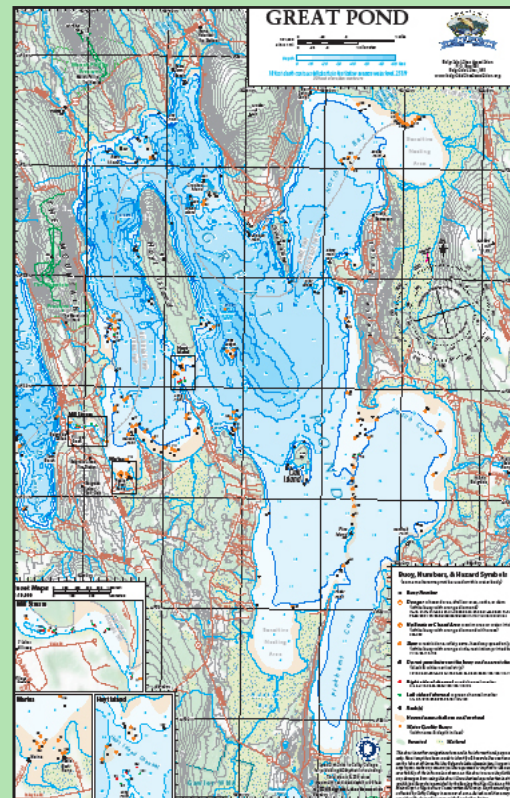
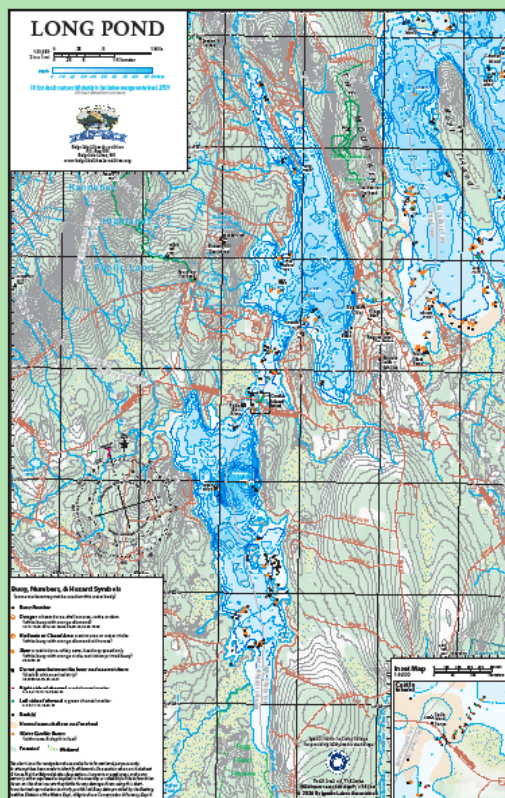
# ANNOUNCING THE UPDATED GREAT POND AND LONG POND LAMINATED CHARTS!

We are excited to announce the release of our newly updated charts for Great Pond and Long Pond! These high-quality, durable 11" x 17" charts are now available at the BLA Raffle tables and select local retailers. Created by a leading cartographer, the new charts are laminated with a matte finish for greater visibility while on the lakes.

## What's New?

- Last updated 16 years ago, our charts now reflect the latest updates since 2008, ensuring you have the most current information.
- New Colby Depth Data: Thanks to Colby College, our charts now include updated bathymetric (depth) data to help you navigate the waters more accurately.
- Additional Landmarks: Discover new points of interest to enhance your experience.
- Updated buoy locations: the latest lat/long locations of both the navigational buoys and water quality buoys provided by the State of Maine and 7 Lakes Alliance
- Hiking Trail Heads: Identify the marked hiking trail heads to plan your next adventure.
- Important information on the latest boating laws and BLA-sponsored lake quality programs

Whether you're a boater, angler or outdoor enthusiast, these updated charts are an essential tool for making the most of your time on Great Pond and Long Pond. Pick up your copy today and enjoy a safer and more informed experience on the water!





**BELGRADE LAKES  
ASSOCIATION**  
137 Main Street  
P.O. Box 551  
Belgrade Lakes, ME 04918

PHONE:  
207.512.5150

EMAIL:  
[info@blamaine.org](mailto:info@blamaine.org)

WEB:  
[belgradelakesassociation.org](http://belgradelakesassociation.org)

#### **BLA Board of Directors**

Bert Languet  
President

Richard LaBelle  
Vice President

Blaine Horrocks  
Treasurer

Steve Smith  
Secretary

George Atkinson  
John Atkinson  
Polly Parkhill Beatie  
Andy Cook  
Pat Donahue  
Liz Fontaine  
Stephanie Gardner  
Dick Greenan  
Louise Hogan  
Nathalie Horrocks  
Sharon Jaffe  
Carol Johnson  
Chris Raleigh  
John Schlosser  
Trent Shute  
Sunil Thakor

Non Profit  
U.S. Postage  
**PAID**  
Permit #1  
Belgrade Lakes ME

## **2024 ANNUAL MEETING - AUGUST 11TH!**

The BLA Member Reception and Annual Meeting will be held on Sunday, August 11th, from 4:00 to 6:00 pm at the Belgrade Lakes Golf Club. This is always a fun and information-packed meeting. Here's what's in store:

An interesting lineup of guest speakers will update us on local conservation activities; mouth-watering hors d'oeuvres will be served by Kate and her staff from The Village Inn; a cash bar will be provided by the golf course staff.

Please make reservations by calling the BLA office at (207) 512-5150 or email [info@BLAMaine.org](mailto:info@BLAMaine.org) no later than August 1st, 2024. Invite your lake neighbors and friends to join us. See you there!



Loon taking off from Long Pond. Courtesy of Peter Agnes.

The newsletter staff (Polly, Liz, and Marcel) hope you enjoy this edition.  
Printed by The Print Shop in the Village, [marcelprints@outlook.com](mailto:marcelprints@outlook.com).